

# THERMAL CAMERA



The thermal camera allows real-time thermography with 100Hz frame rate via USB 2.0 interface. The camera is lightweight, compact, and rugged (IP65). Measurement ranges of -20°C to 100°C, 0°C to 250°C, or 250°C to 900°C are available.

The interchangeable lenses are available with 9° field of view (f=36mm, 200mm min distance) and 31° field of view (f=10mm, 50mm min distance).

## Electrical

- Power supply and operation via USB interface (supply 4.75V to 5.25V)
- Measurement range 0°C to 250°C
- Lens 31° field of view (f=10mm, 50mm min distance)
- Spectral range 7.5µm to 13µm
- Frame rate 100Hz
- Optical resolution 160x120 pixels
- System accuracy ±2% or ±2°C
- Display resolution 0.1°C
- Emissivity 0.1 to 1.0 adjustable
- Thermal sensitivity 0.08K with 31° FOV lens (0.30K with 9° FOV lens)

## Mechanical

- Weight less than 200g
- Aluminium body hard anodised black

## Environmental

- Resistant to standard motorsport fluids
- Environment rating IP65
- Operating temperature 0 to 50°C
- Storage temperature -40 to 70°C
- Relative humidity 20 to 80% non-condensing
- Vibration 2G, IEC 68-2-6
- Shock 25G, IEC 68-2-29

## Application

- Real-time thermography

## Cable and Connection Definition

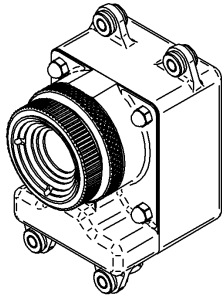
- Integral connector version Deutsch ASU03-03-05PN
- Connection
 

Pin 1	Supply
Pin 2	Signal
Pin 3	Data +
Pin 4	Data –
Pin 5	NC
Connector body	Screen <sup>1</sup>

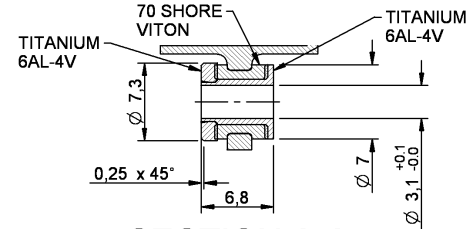
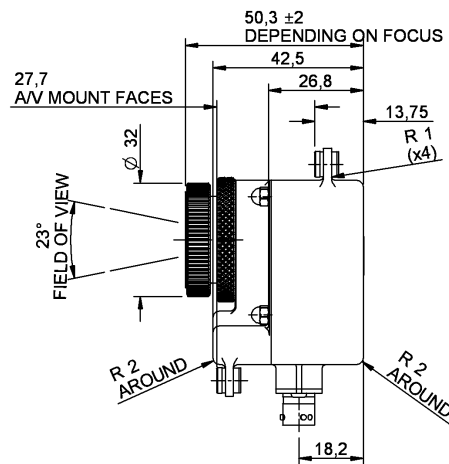
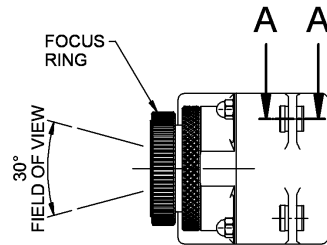
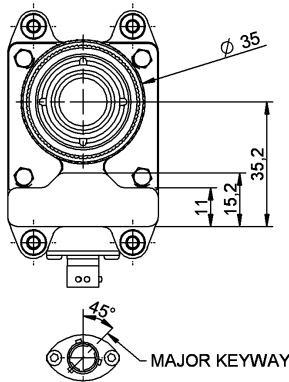
<sup>1</sup> USB cable screen must be connected to the connector body

Design and manufacture is in-house, so if our existing designs do not suit your application, we can provide cost effective customised parts to suit even the most demanding application. Please contact our technical consultancy service who will be pleased to help.

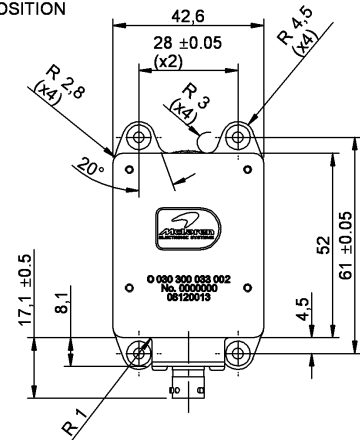
# THERMAL CAMERA



ISOMETRIC VIEW



SECTION A-A  
4 POSNS



**Measurement range**  
0°C to 250°C

**Order Code**  
O 030 300 033 002